

Tilapia Workshop

18 June 2009

Nick Read

British Trout Association

nicholas.read@btconnect.com

British Trout Association

- Executive officer: David Bassett
- 0131 472 4080
- david.bassett@britishtrout.co.uk



British Trout Association

1. The industry we serve
2. Scope and Roll of the Association
3. Structure
4. Funding

UK Trout Sector

- Circa 300 registered farms
- Almost all SME's, mainly owner/operator
- Trend towards grouping of businesses
- Specialist production sectors
 - ◆ Fry & Fingerling
 - ◆ Restocking
 - ◆ Table Trout Growers



UK Trout Sector Production Statistics

Total of 17,300 tonnes rainbow trout

- ◆ 13,000 table production
- ◆ 4,300 restocking production

Farming Units

- ◆ Ranging from <10 tonnes to >1,000 tonnes
- ◆ Fresh water, land-based, flow through farms & cage sites
- ◆ Approx 2,000 tonnes of large trout grown at sea

UK Trout Sector

Employment

- Direct Employment: **600 FTE's**
- Upstream & Downstream Activity: **1,300 FTE's**

Economic value

First Sale (ex-farm)

- Value in region of **£34 million**

Total Industry Turnover (including processors & angling)

- Estimated value **£180 million**

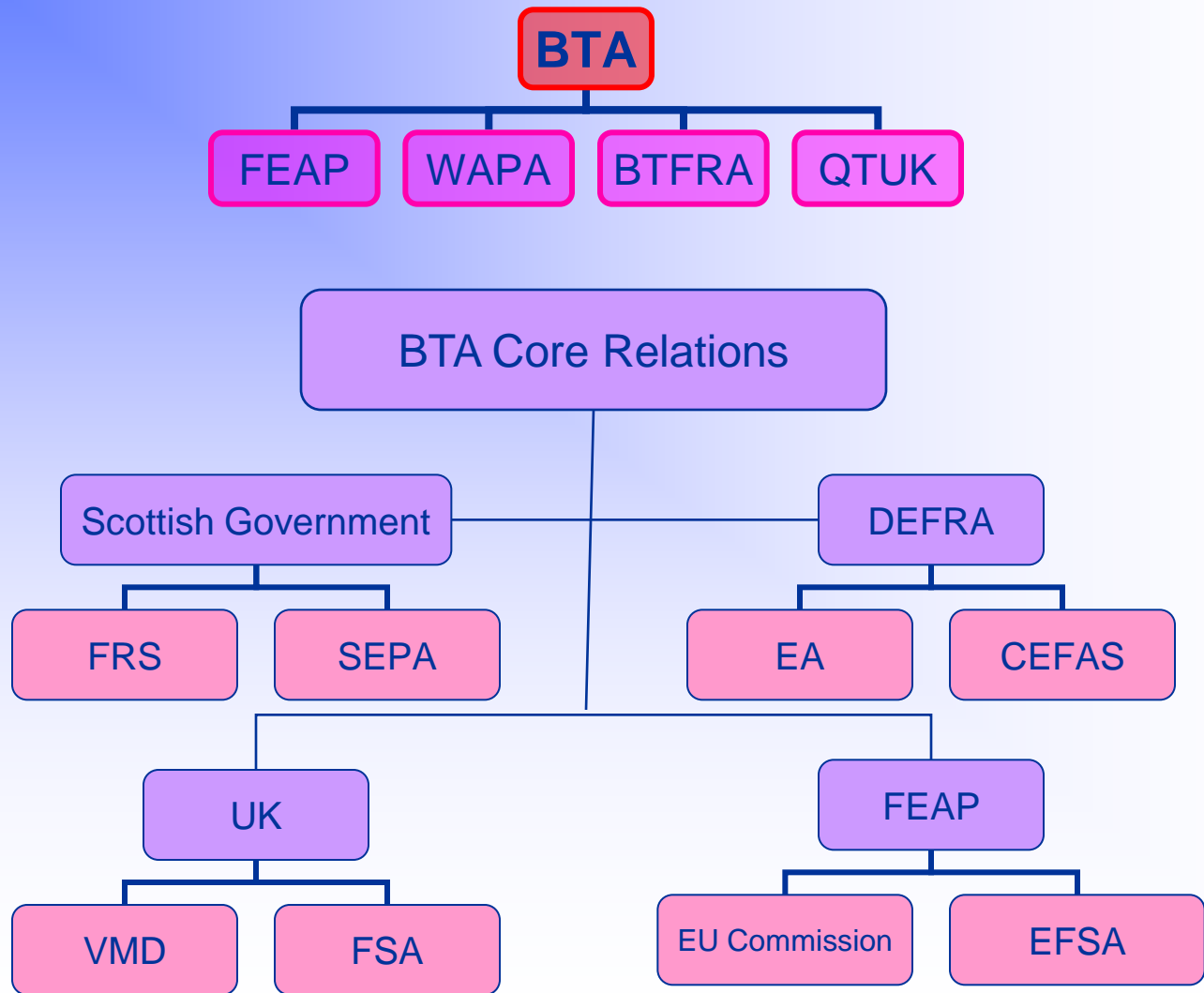
British Trout Association

Scope and Roll

1. represents 80% UK trout production
2. liaises with EU & UK legislative & regulatory bodies
3. co-ordinates and funds R&D, through cash/in-kind
4. manages “QTUK” quality assurance scheme
5. handles issues management
6. member of Federation of European Aquaculture Producers (FEAP)
7. administers British Trout Farmers Restocking Association (BTFRA)
8. Generic Promotion of trout products

BTA Structure and Relations

Up / Down
Stream
industries &
associations
General Public
Media



Quality Assurance

Quality Trout UK

- Standards cover Fingerling to Fork (hatchery through processor)
- Managed & administered by BTA
- Inspected and Certified by EFSIS
- Accredited by UKAS to EN45011
- Represents 80 % of table production, 90 % of processed product
- Pan-European trout QA scheme has being discussed
- Dialogue with World Wildlife Fund is in progress
- QA now a pre-requisite for supply, not a marketing tool

BTA Funding

Total funding approx £150K/year

Around 50% from a feed levy collection

Remainder as direct membership and levy on feed purchases, therefore a 'fair' system

£150K buys one full time staff member, one consultant, some part time help, an R&D budget, a retained 'expert', and office costs.

Core aims:

- to provide a legislative framework within which the industry can thrive
- to ensure legislation is based on sound science
- ensure R & D is directed to meet current and future legislative constraints
- promoting fish as healthy food & aquaculture as a sustainable practice
- to encourage innovation to reduce production cost in line with falling food prices
- to speak as the voice of the industry
- access to EFF

Trade Association Building Blocks

- 1. Constitution and Rules
- 2. Recognition as speaking for the sector
- 3. Funding system
- 4. Code of Practice
- 5. Quality Assurance
- 6. Best practice 'Briefing Notes'
- 7. Appropriate R&D
- 8. Generic promotion



Who needs a trade association?

- ☞ Individual farming businesses
- ☞ Government and its agencies
- ☞ Supply chain stakeholders





Objectives

- ⊕ To provide a forum for the National Associations that represent European Fish Farming
- ⊕ To develop common opinions on issues of importance
- ⊕ To communicate those opinions to relevant authorities
- ⊕ To have early involvement and to influence proposed legislation





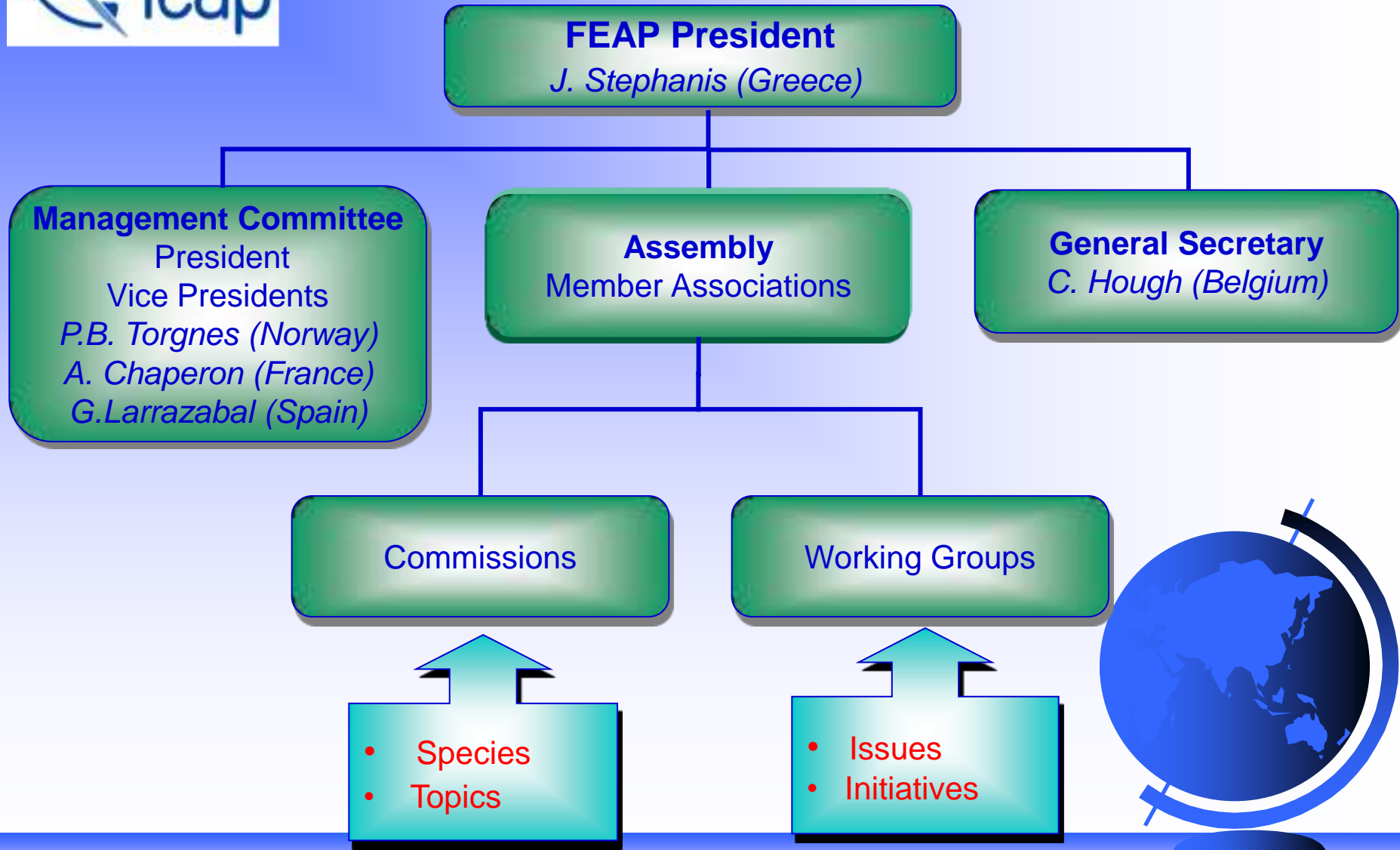
Representation

- The Federation is composed of National Aquaculture or Fish Farming Associations
- 28 Associations represent 23 European Nations





Operating Structure





Commissions & Working Groups

In order to respond to the importance and the variety of issues, the Federation has established Permanent Commissions and ad hoc Working Groups, which report to the Assembly and the Management Committee.

Permanent Commissions for :

- General Topics [Plenary]
 - Environment
 - Fish Health
 - Marketing and Promotion
 - European Affairs





Commissions & Working Groups

In order to respond to the importance and the variety of issues, the Federation has established Permanent Commissions which report to the Assembly and the Management Committee.

Permanent Commissions for :

- General Topics [Plenary]
 - Environment
 - Fish Health
 - Marketing and Promotion
 - European Affairs





Commissions

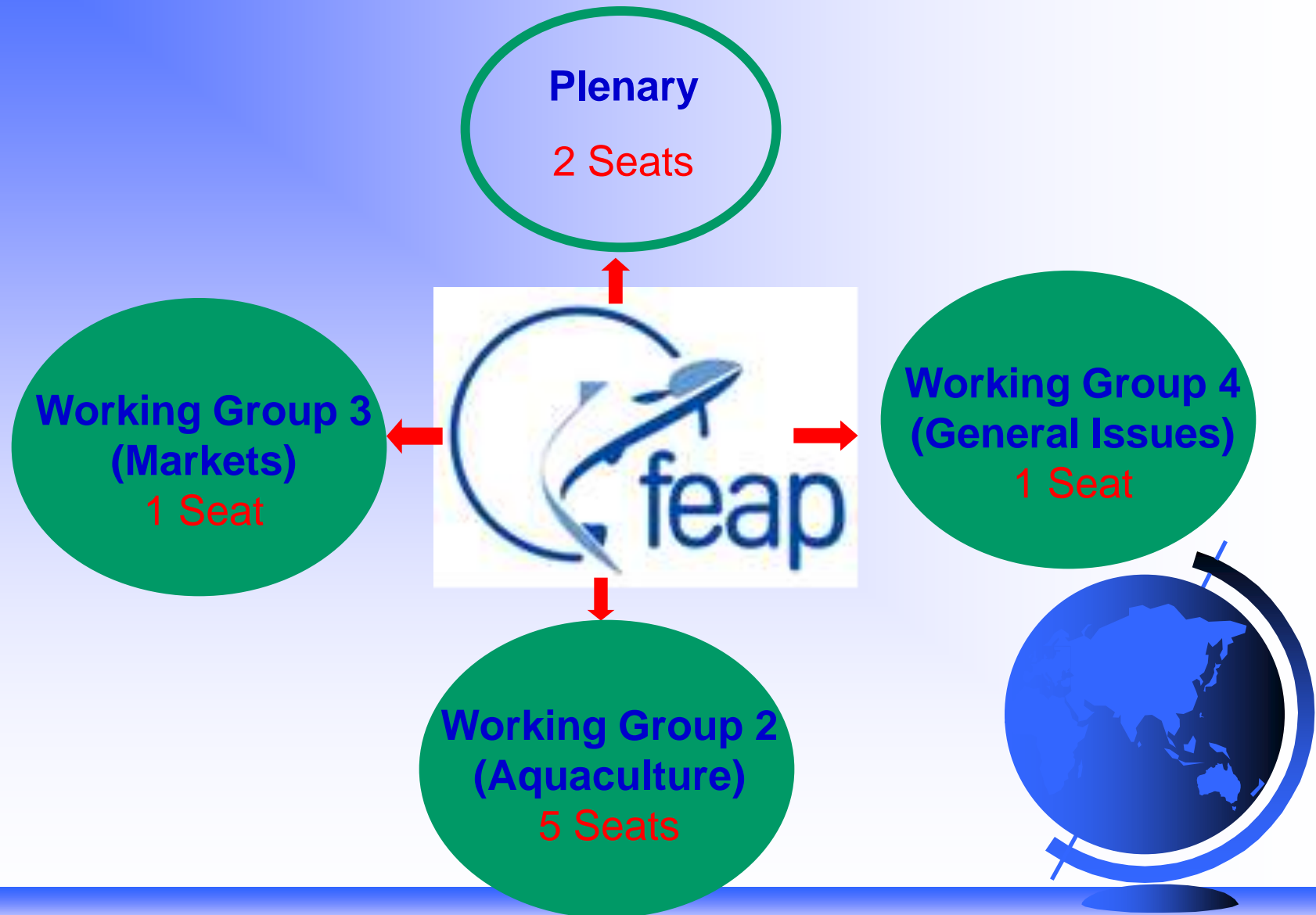
- Species-specific Topics
 - Portion Trout
 - Salmon and Large Trout
 - Mediterranean Marine Species
 - Freshwater species (non-salmonid)

FEAP meets regularly twice a year (May and October) and, exceptionally, at other times.

Proposals on important issues are debated in the Commissions, Resolutions are developed which are forwarded to relevant EU bodies, through ACFA.



Advisory Committee on Fisheries & Aquaculture (ACFA)



British Trout Association

The End

Nick Read

nicholas.read@btconnect.com

David Bassett

david.bassett@britishtrout.co.uk

0131 472 4080

